

## SERIES Mini -QMA CONNECTORS

### DESCRIPTION

The Mini-QMA, designed by James Qu at Anoisn in 2006, is the smallest QMA connector on the market to date. The shortened length of the Mini-QMA jack makes this rugged, low profile connector an ideal solution for traditional Quick Lock SMA applications that have space constraints: particularly those that require panel or PCB mounting. Additionally, Mini-QMA offers 10x faster mating/de-mating than SMA, conserves space by eliminating the need for torque wrench clearance, and allows for the cable to be rotated 360° after the connector has been attached.

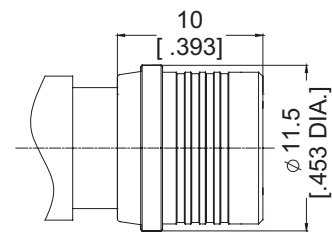


### CONTENT

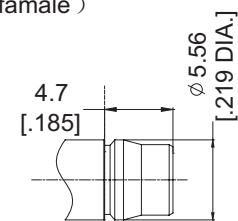
Description.....	14
Interface Dimensions .....	14
Characteristics .....	15
Cable Connectors.....	16
Panel Receptacles.....	17
In Series Adapter .....	18
Between Series Adapters .....	19
Termination .....	20

### INTERFACE DIMENSIONS

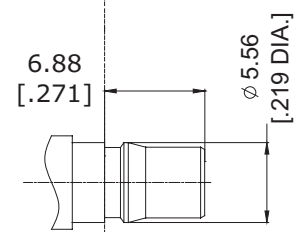
Plug (male)



Jack (female)



Mini-QMA



QMA

(COMPARED TO QMA)

## CHARACTERISTICS

ELECTRICAL	REQUIREMENTS
Impedance	50 Ω
Frequency range	DC to 18 GHz
Dielectric Withstanding Voltage	1000 V rms 50 Hz, sea level
Working Voltage	≤480 V rms 50 Hz, sea level
VSWR	Straight connector, .141": ≤1.25 (DC~18 GHz) Straight connector, RG316: ≤1.23 (DC~6 GHz) Right angle connector, .141": ≤1.40(DC~18 GHz) Right angle connector, RG316: ≤1.30(DC~6 GHz)
Insulation Resistance	5×10 <sup>3</sup> MΩ min.(initial)
Power Handling	150 W @ 2.5 GHz typical
Contact Resistance	
- Center contact	3.0 mΩ max.
- Outer contact	2.5 mΩ max.
Passive Intermodulation	-120 dBc @ 1.8 GHz 2x20 W static
RF-leakage	
- DC to 3 GHz	- 80 dB min
- 3 to 6 GHz	- 70 dB min

MECHANICAL	REQUIREMENTS
Mating Characteristics	
- Engagement Force	25 N typical
- Disengagement Force	30 N typical
Interface Retention Force	100 N min.
Durability ( Mating Cycles)	200 min.

ENVIRONMENTAL	REQUIREMENTS
Temperature Range	-40°C to +85°C
Thermal Shock	IEC 60169-1 16.4 (-40°C/ +85°C)
Corrosion	IEC 60169-1 16.7 (48 hrs)
Damp Heat	IEC 60169-1 16.3 (96 hrs) steady state
Vibration	IEC -68-2-64 random 5-20Hz: 1.29 (m/s <sup>2</sup> ) <sup>2</sup> /Hz 20-500Hz -3dB/octave
Dust & Moisture protection	IEC 60529
IP Rating interface	IP 68

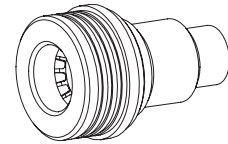
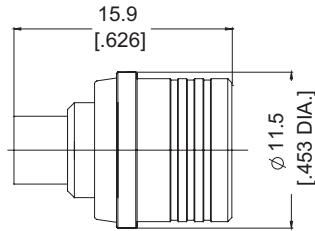
Note : The above characteristics are typical but may not apply to all connectors.

CABLE CONNECTORS

**Straight Cable Plugs (male)**

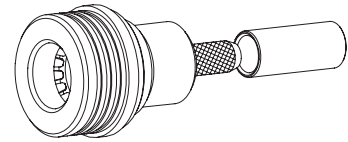
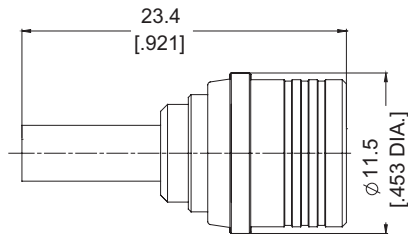
> for semi-rigid cables

Part No.	Description
ANO 2811-2002	Mini-QMA straight plug solder for semi-rigid.141/ RG402



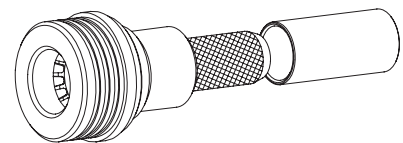
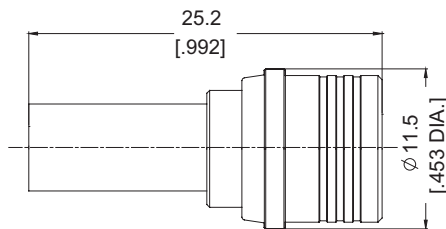
> for flexible cables

Part No.	Description
ANO 2811-2001	Mini-QMA Straight plug crimp for RG316/RG178/LMR100



> for flexible cables

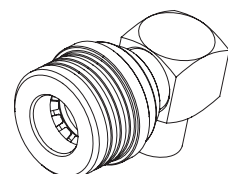
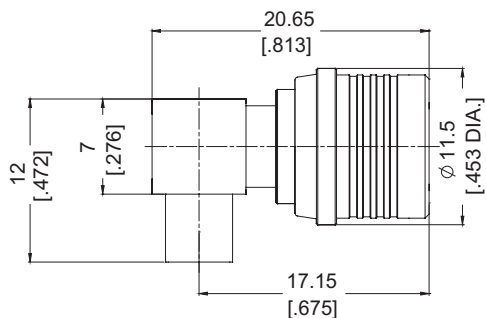
Part No.	Description
ANO 2811-2009	Mini-QMA Straight plug crimp for RG58/LMR195/LMR200



**Right Angle Cable Plugs (male)**

> for semi-rigid cables

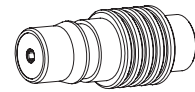
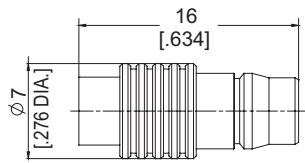
Part No.	Description
ANO 2821-2008	Mini-QMA Right Angle plug solder for semi-rigid.141/ RG402



### Straight Cable Jacks (female)

>for semi-rigid cables

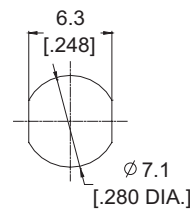
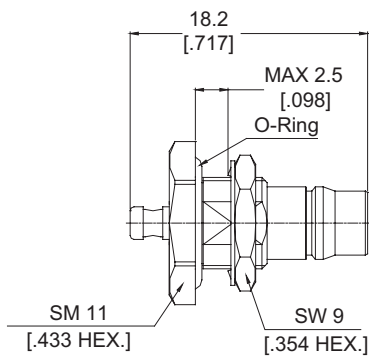
Part No.	Description
ANO 2812-2004	Mini-QMA straight jack solder for semi-rigid.141/ RG402



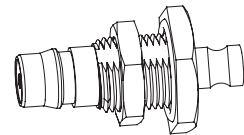
### Straight Bulkhead Cable Jacks (female)

>for semi-rigid cables

Part No.	Description
ANO 2812-1005	Mini-QMA Straight jack bulkhead solder for od=1.13

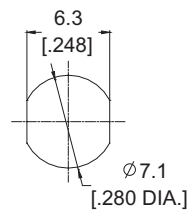
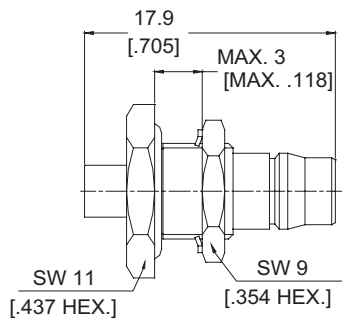


Mounting Dimensions

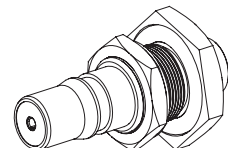


>for semi-rigid cables

Part No.	Description
ANO 2812-1003	Mini-QMA jack bulkhead solder for semi-rigid .086/RG405



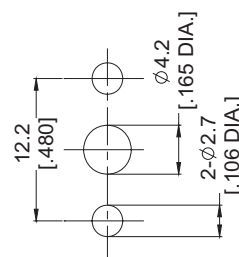
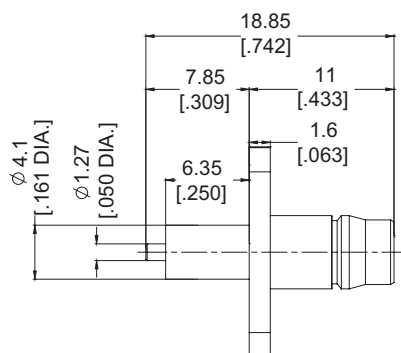
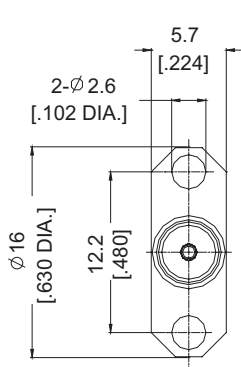
Mounting Dimensions



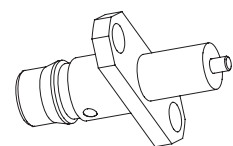
### PANEL RECEPTACLES

> 2 Hole Panel

Part No.	Description
ANO 2812-3006	Mini-QMA Straight jack receptacle 2 hole Flange

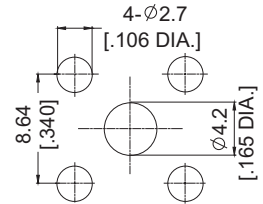
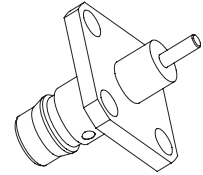
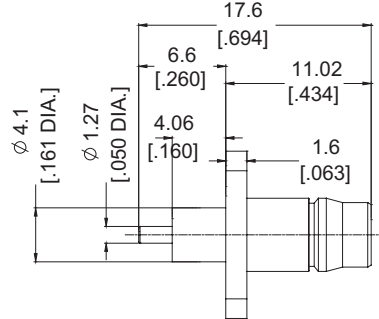
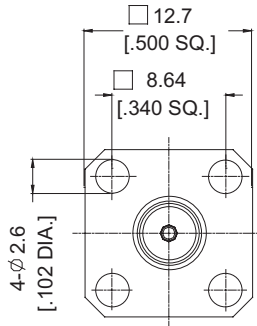


Mounting Dimensions



## > 4 Hole Panel

Part No.	Description
ANO 2812-3007	Mini-QMA Straight jack receptacle 4 hole Flange

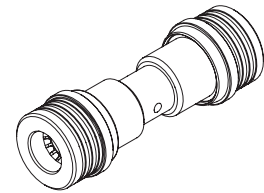
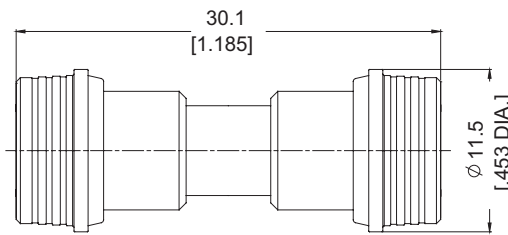


Mounting Dimensions

## IN SERIES ADAPTER

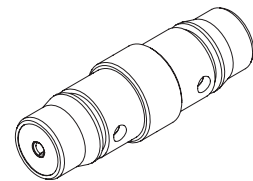
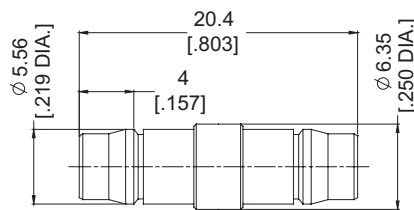
### > Mini-QMA / Mini-QMA

Part No.	Description
ANO 281-281-1048	Mini-QMA male- Mini-QMA male



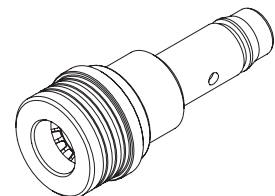
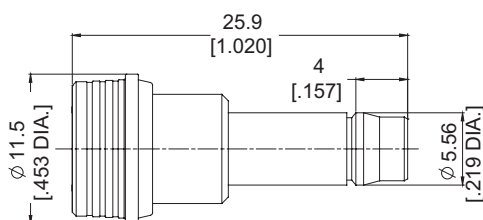
### > Mini-QMA / Mini-QMA

Part No.	Description
ANO 282-282-1049	Mini-QMA female- Mini-QMA female



### > Mini-QMA / Mini-QMA

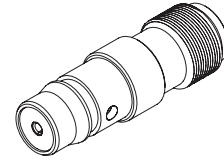
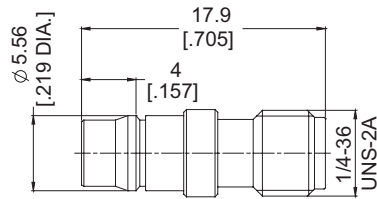
Part No.	Description
ANO 281-282-1050	Mini-QMA male- Mini-QMA female



BETWEEN SERIES ADAPTERS

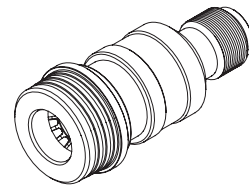
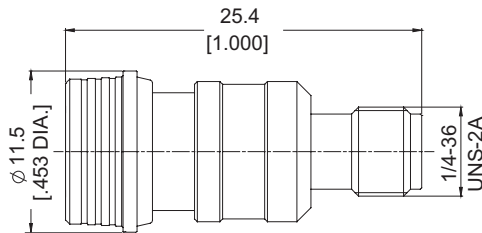
> Mini-QMA / SMA

Part No.	Description
ANO 282-212-1052	Mini-QMA female to SMA female



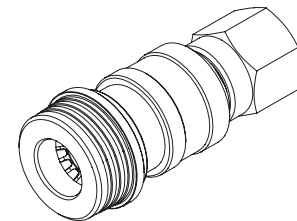
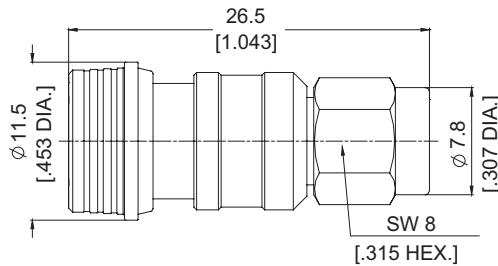
> Mini-QMA / SMA

Part No.	Description
ANO 281-212-1053	Mini-QMA male to SMA female



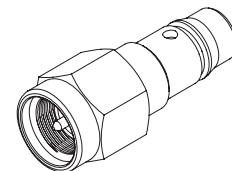
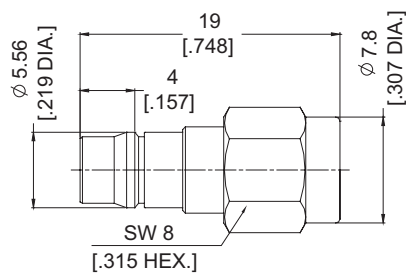
> Mini-QMA / SMA

Part No.	Description
ANO 281-211-1051	Mini-QMA male- SMA male



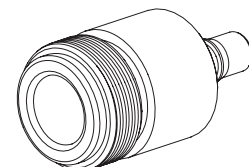
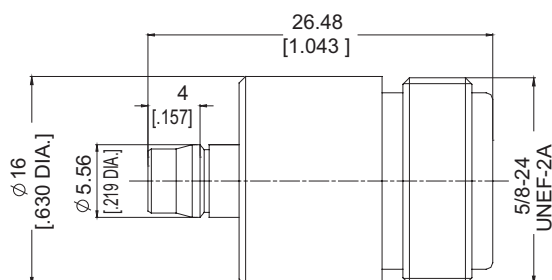
> Mini-QMA / SMA

Part No.	Description
ANO 282-211-1054	Mini-QMA female- SMA male



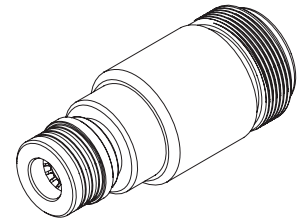
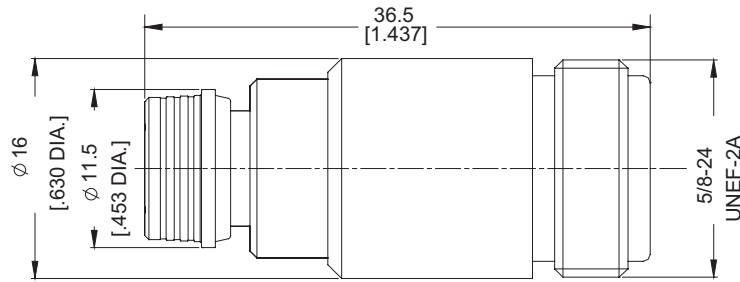
> Mini-QMA / N

Part No.	Description
ANO 282-512-1056	Mini-QMA female to N female



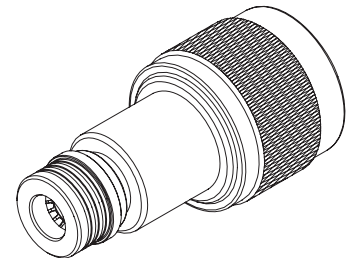
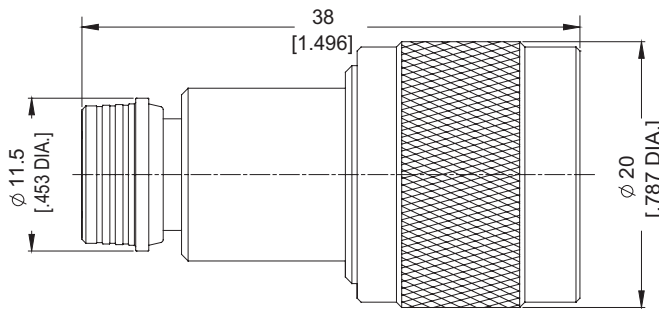
## > Mini-QMA / N

Part No.	Description
ANO 281-512-1057	Mini-QMA male to N female



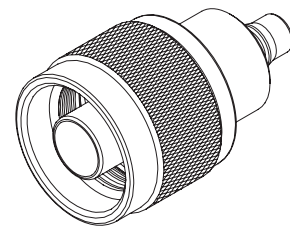
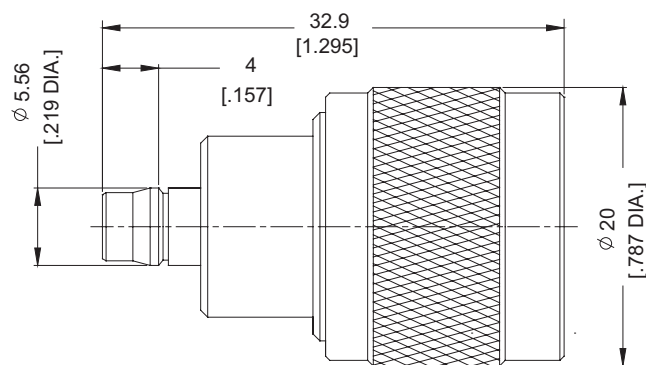
## > Mini-QMA / N

Part No.	Description
ANO 281-511-1055	Mini-QMA male- N male



## > Mini-QMA / N

Part No.	Description
ANO 282-511-1058	Mini-QMA female- N male



## TERMINATION

### > Low power 1 to 2W CW, 100W peak

Part No.	Description
ANO 281-701	RF Termination, Mini-QMA Male, 1W, 0-6GHz

